



## Auxiliary Light Mounting Kit

BMW K1600GTL 2018  
BMW K1600B 2018

### Thank you for choosing DENALI

We know you would rather be riding your bike than wrenching on it, so we go the extra mile to make sure our instructions are clear and as easy to understand as possible. If you have any questions, comments, or suggestions don't hesitate to give our gear experts a call at 401.360.2550 or visit WWW.DENALIELECTRONICS.COM

### Please Read Before Installing

DENALI products should always be installed by a qualified motorcycle technician. If you are unsure of your ability to properly install a product, please have the product installed by your local motorcycle dealer. DENALI takes no responsibility for damages caused by improper installation. **Caution:** When installing electronics it is extremely important to pay close attention to how wires are routed, especially when mounting products to the front fender, front forks, or fairing of your motorcycle. Always be sure to turn the handlebars fully left, fully right, and fully compress the suspension to ensure the wires will not bind and have enough slack for your motorcycle to operate properly.

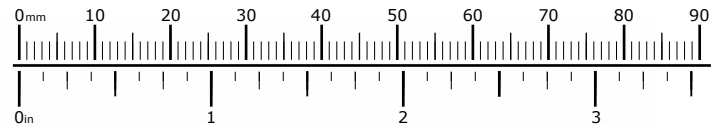
### Installation Tips

We strongly recommend using medium strength liquid thread locker on all screws, nuts, and bolts. It is also important to ensure that all hardware is tightened to the proper torque specifications as listed in your owner's manual. For included accessory hardware please refer to the default torque specifications provided below. Inspect all hardware after the first 30 miles to ensure proper torque specifications are maintained.

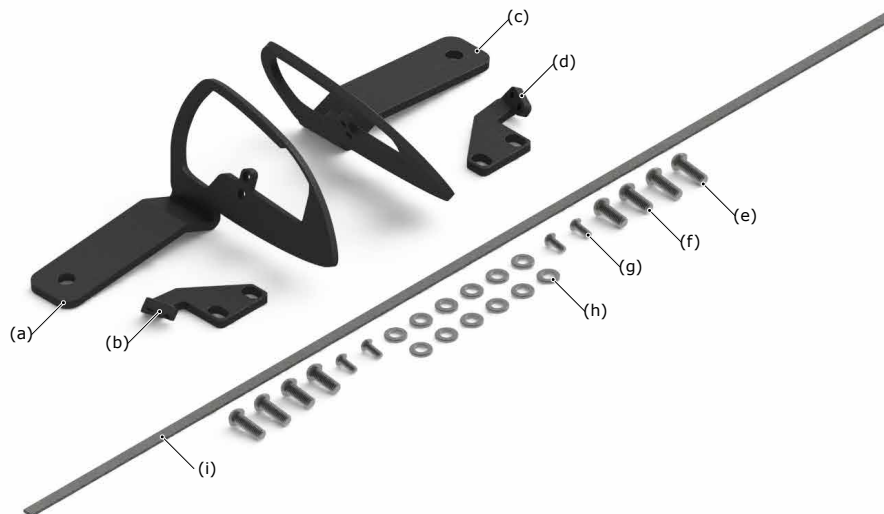
Bolt Size	in-lbs	ft-lbs	Nm
M3	10.0 in-lbs	-	1.0 Nm
M4	23.0 in-lbs	-	2.5 Nm
M5	44.5 in-lbs	3.5 ft-lbs	5.0 Nm
M6	78.0 in-lbs	6.5 ft-lbs	9.0 Nm
M8	-	13.5 ft-lbs	18.0 Nm
M10	-	30.0 ft-lbs	41.0 Nm
M12	-	52.0 ft-lbs	71.0 Nm

### Hardware Sizing Guide

Not sure what size bolt you have? Use this ruler to measure screws, bolts, spacers, etc. Remember, the length of a screw or bolt is measured from the start of the "mounting surface" to the end of the screw, so only include the screw head when measuring countersunk screws.



## What's In The Box?



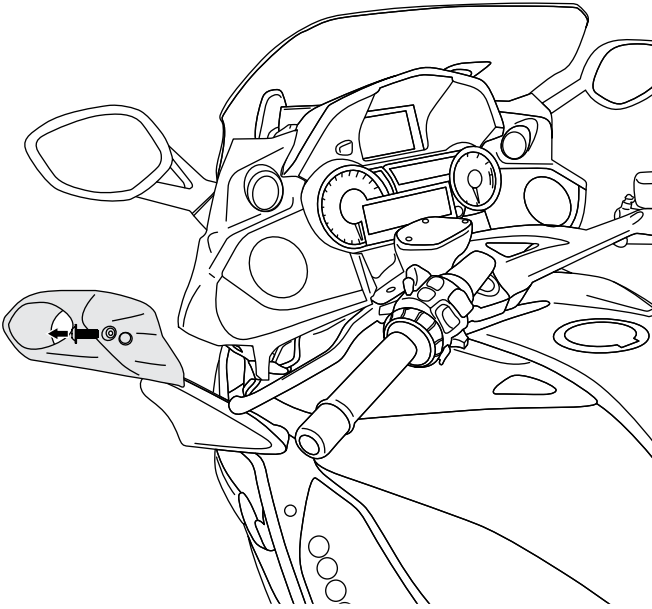
### Kit Contents

- (a) Right Side Light Mounting Bracket.....Qty 1
- (b) Right Side Mirror Adapter.....Qty 1
- (c) Left Side Light Mounting Bracket.....Qty 1
- (d) Left Side Mirror Adapter.....Qty 1
- (e) M6x18 ISO 7380.....Qty 4
- (f) M6x16 ISO 7380.....Qty 4
- (g) M4x10 ISO 7380.....Qty 4

- (h) M6 Washer DIN 125.....Qty 12
- (i) Adhesive Backed Foam.....L: 24"

**Tools Required:** T30 Torx, T25 Torx, 4mm Allen Key, 2.5mm Allen Key

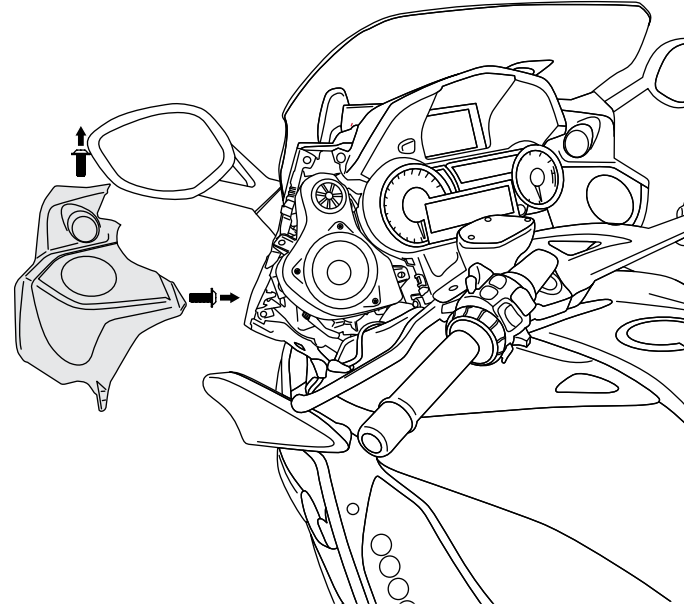
# 1. Accessing The Mounting Point



## 1.1 - Removing The Air Duct Panel

**Step One:** Use a T25 Torx tool to remove the bolt holding the air duct panel to the left side of the motorcycle.

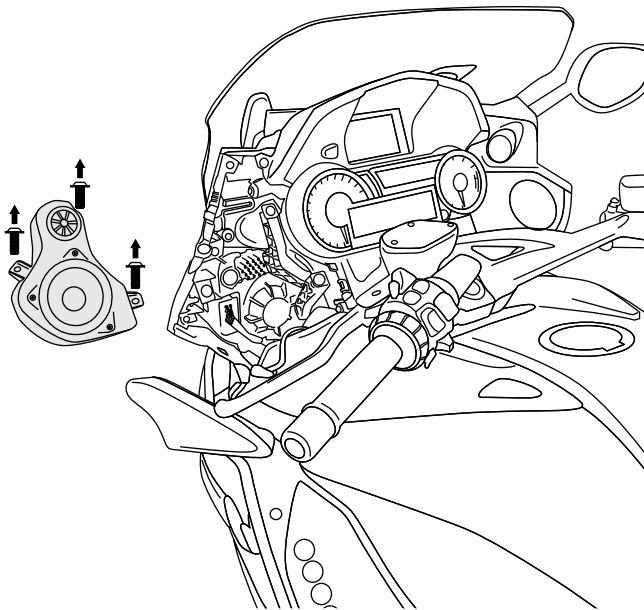
**Step Two:** Remove the air duct panel.



## 1.2 - Removing The Speaker Panel

**Step One:** Use a T25 Torx tool to remove the two bolts that attach the speaker panel to the motorcycle.

**Step Two:** Remove the speaker panel.

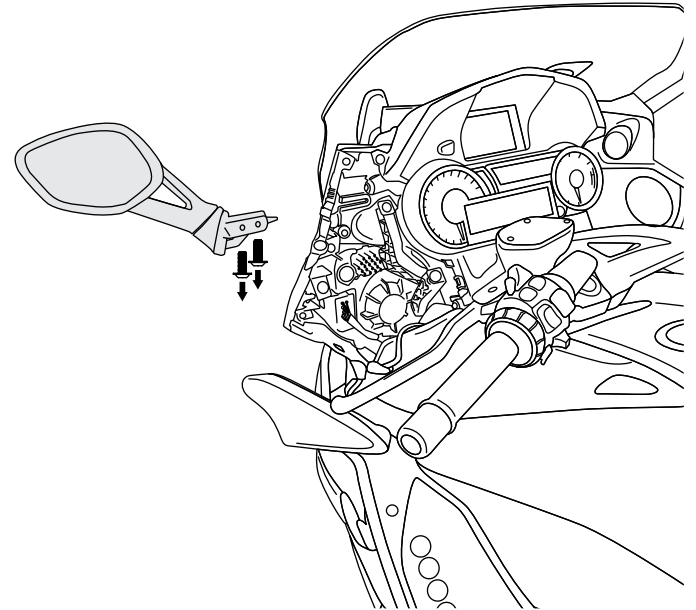


## 2.1 - Removing The Speaker

**Step One:** Use a T25 Torx tool to remove the three bolts that attach the speaker to the motorcycle.

**Step Two:** Disconnect the connector located at the lower right hand corner of the speaker.

**Step Three:** Remove the speaker.

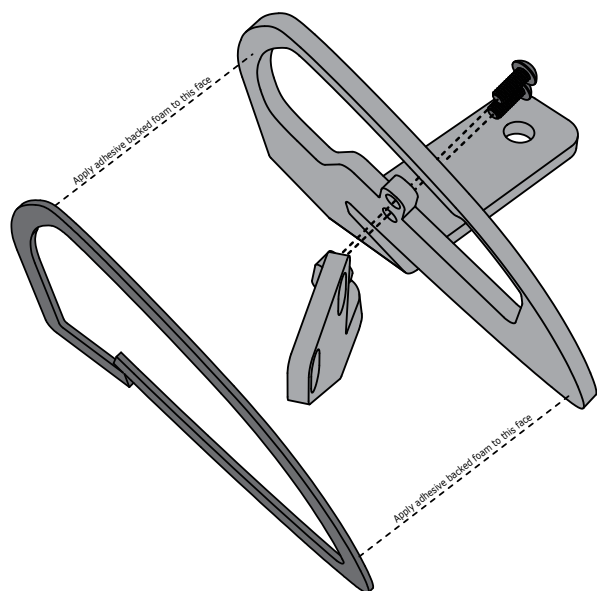


## 2.2 - Removing The Mirror

**Step One:** Use a T30 Torx tool to remove the two bolts that attach the mirror to the motorcycle.

**Step Two:** Remove the mirror.

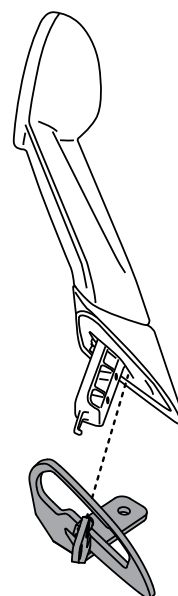
# 3. Installing The Mount



## 3.1 - Assembling The Bracket

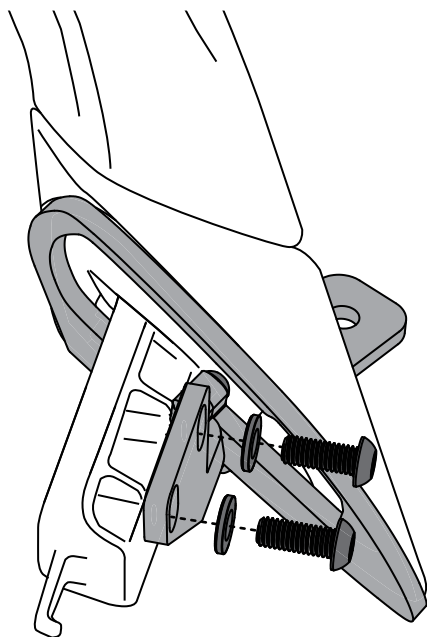
**Step One:** Use two 2.5mm allen key and two of the included M4x10 bolts (g) to attach the LHS mirror adapter (d) to the LHS mount (c).

**Step Two:** Use scissors to cut a 12 inch section of the adhesive backed foam (i). Then use the foam to line the outer border of the mirror mount (c). This will protect the surface of the fairing from scuffing over time.



## 3.2 - Mounting The Bracket

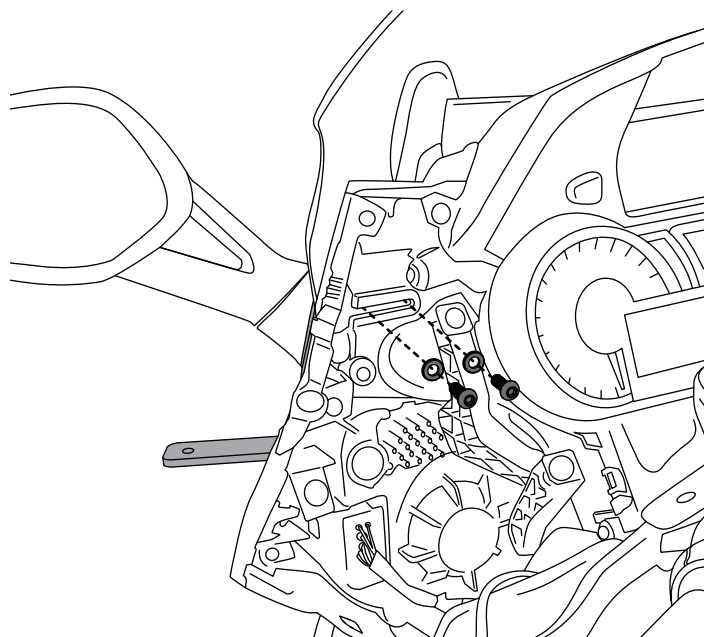
**Step One:** Slide the assembled bracket over the mirror as illustrated above. Note that the mirror adapter mounts to the forward side of the mirror's mounting arm.



## 3.3 - Mounting The Bracket

**Step One:** Use a 4mm allen key and two of the included M6x16 bolts (f) and M6 washers (h) to secure the assembled bracket to the mirror.

**Note:** Due to variances in the production of the mirror the bracket may not sit completely flush against the mounting surface. If the bracket does not sit completely flush against the mirror the additional washers (h) included in the kit can be stacked under the bracket to level it to the surface of the mirror.



## 3.4 - Re-Mounting The Mirror

**Step One:** Slide the mirror back into position on the motorcycle.

**Step Two:** Use a 4mm allen key and two of the included M6x18 bolts (e) and M6 washers (h) to secure the mirror back to the motorcycle.

**Step Three:** Repeat steps 1-15 on the right side of the motorcycle using the remaining parts and hardware.

**Step Four:** Before operating the motorcycle, turn the handlebars fully left, fully right and fully compress the suspension. Confirm that the lights do not interfere with operation and that the wires have enough slack to account for all suspension and steering movement.